



IOP PLUS
DESIGN . BUILD . OPERATE

ABOUT US

IPLUS was launched as an IT Service Provider Company . in fact, IPLUS offers complete ICT solutions, services and products to achieve the customers business goals. even more, the company presents a unique balance of innovation and peace of mind to your ICT solutions. whether you want to progress your Smart City, Smart Buildings, Data centre facilities, physical security, ICT Active/Passive infrastructure, IOT and Block chain . certainly, we are working with highly collaborative innovative techniques to take you to the next level. additionally, Customer satisfaction is considered the most high priority to our team, a group of a talented and professionals is engaged to provide all smart solutions.



WHY IPLUS

Our customers wants to excel in every aspect of their businesses, which leads to take advantage of state of the arts technological solutions available in the market which leads to take an competitive edge . Here is the role of IPLUS to provide CUSTOMERS with state of the art ICT smart solutions to maximize efficiency and security, minimize cost, and achieve your unique goals. Our expertise, resources, and attention to detail make us the ideal choice to meet the client's needs.



WHAT

We provide innovative solutions and professional services for all industries, including Real Estate, Healthcare, Hospitality and leisure, Education, Shopping Malls & Retail, Financial, and more.

WHO

Our talented staff of engineers delivers complete solutions, providing a strategic advantage and a positive Return on Investment (ROI) for our customers

HOW

We are committed to the highest level of quality, and professionalism as measured by our market reputation.

VISION

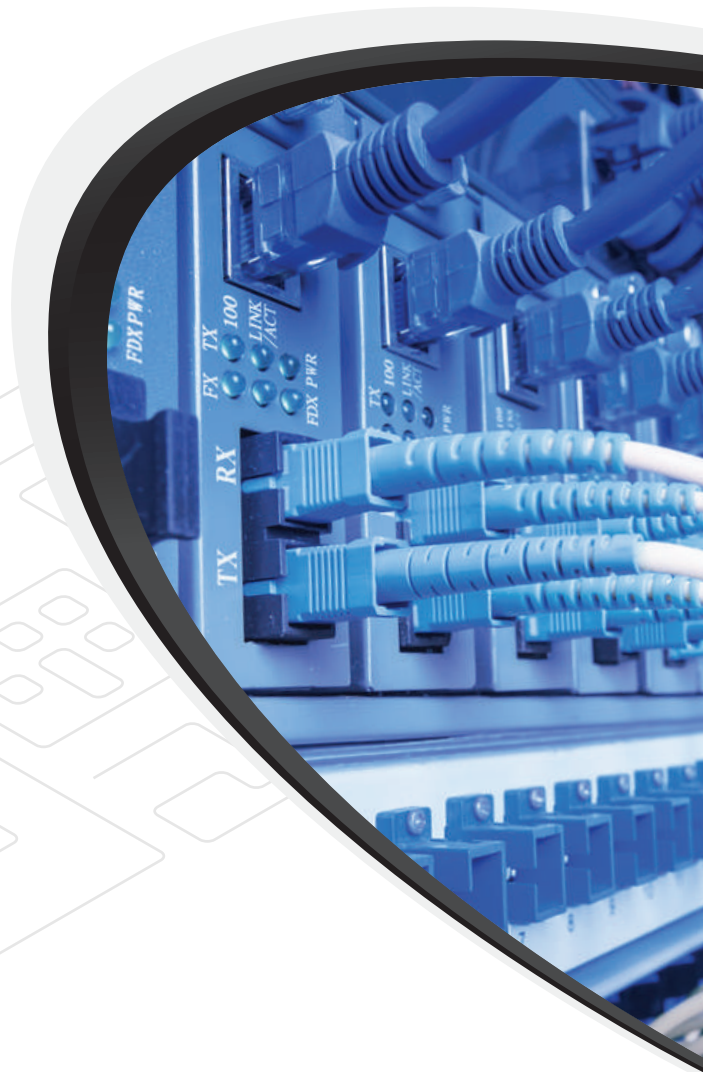
Our Vision to be A world class global ICT provider for all industries.

MISSION

Our mission is to transform IPLUS into a one-stop, global ICT provider for all industries, including Real Estate, Healthcare, Hospitality and leisure, Education, Shopping Malls & Retail, Financial, and more.

VALUES

- Commitment
- Innovation
- Quality
- Integrity
- Customer satisfaction



IOT PLUS

The rise of the smart home is one way that the IoT is changing things for people around the world – homes filled with devices that can communicate with one another, with people living in the home, and even with outside third parties . However, this technology is not constrained just to our homes. It's growing in terms of both scope and capabilities. Enter the smart city, where the Internet of Things will impact everything from lighting to the flow of traffic through urban centers. A smart city brings together technology, government and society to enable a smart economy, smart mobility, a smart environment, smart people, smart living and smart governance."

We need to turn to actual use cases to determine what defines a smart city. There are quite a few ways in which this sort of technology is being utilized today around the globe .



EXPERTISE

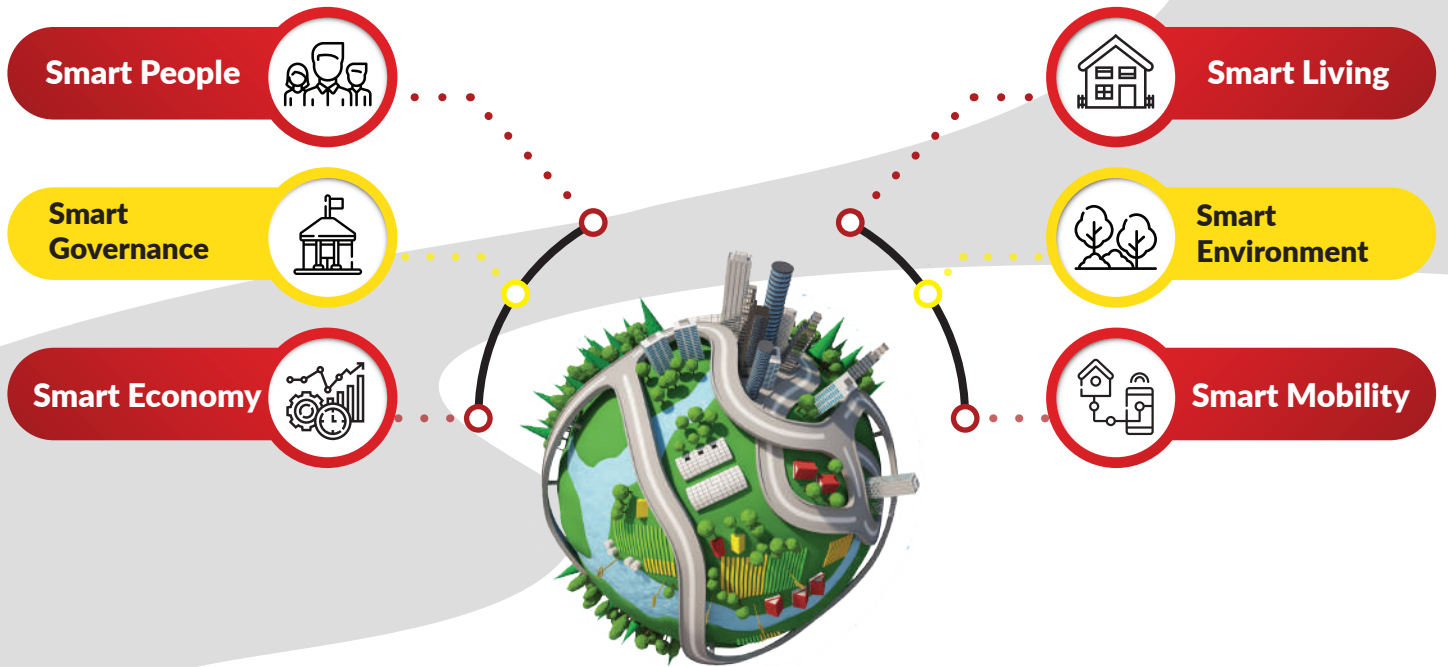
SMART CITY DIMENSIONS

INFRASTRUCTURE

SMART BUILDINGS

PHYSICAL SECURITY

SMART CITY



RUNNING A COMMUNITY ON NETWORKED INFORMATION
SUSTAINABILITY SERVICES DELIVERED BY TECHNOLOGY

Social
Engagement of people of
all ages and capabilities

Environmental
Protection of the world
for future generations

Economic
Efficient operation and
business growth

SMART CITY PILARS



Developments have traditionally addressed issues in Silos, Every community department makes investments independently resulting in:

- No sharing of infrastructure and resources
- No sharing of intelligence/information
- Excess of investment and duplication of effort
- Difficulty in scaling infrastructure management

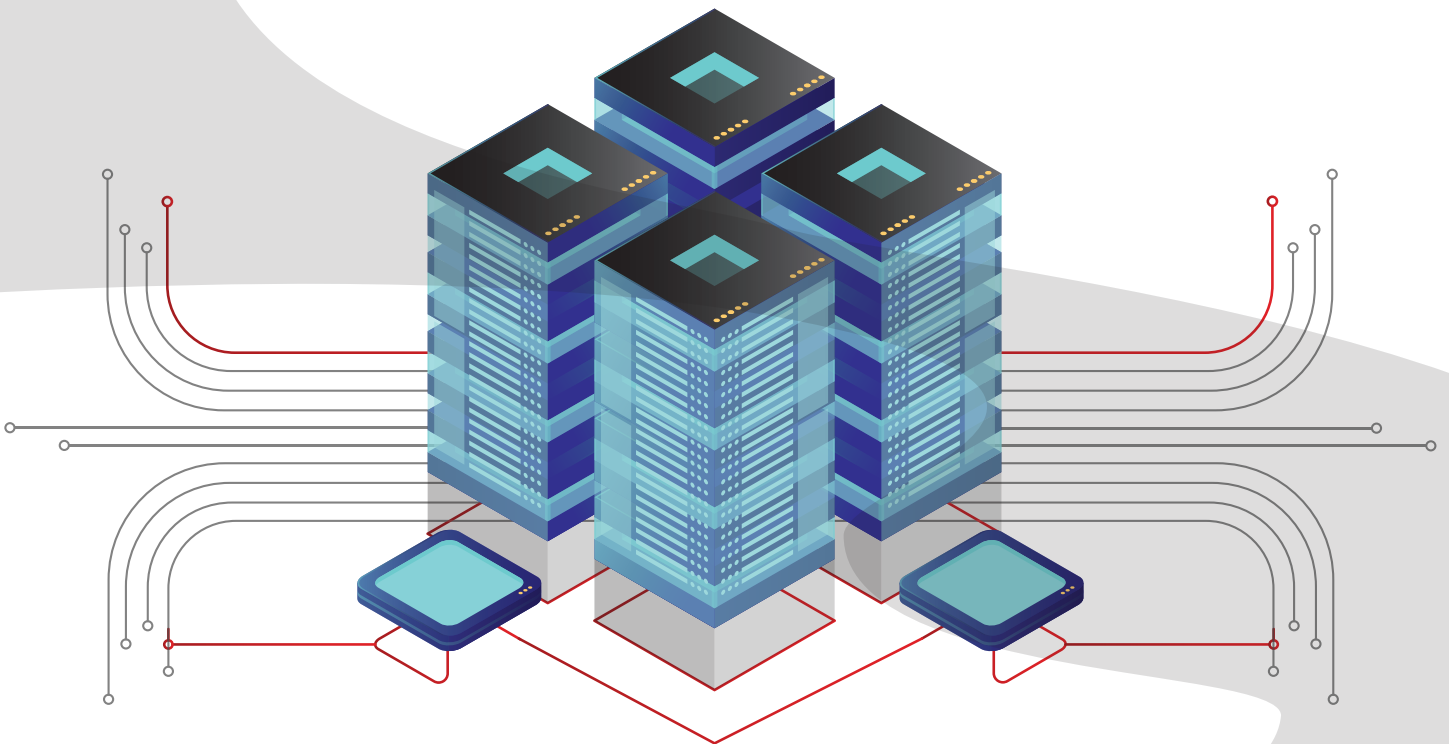
IPLUS committed to provide the unified solutions for Smart community that achieves the smart Cities dimensions and pillars which includes:

- Smart Parking
- Smart utilities
- Smart lighting
- Smart waste management
- Smart irrigation

INFRASTRUCTURE

In today's technology-driven environment, business agility depends on IT agility. But for many organizations, the potential business value of information technology has become trapped within traditional IT infrastructures that are too rigid, costly and complex to keep up with the pace of real-time business.

IPLUS will assist our clients in planning, designing and implementing their infrastructure either active or passive.



ACTIVE INFRASTRUCTURE

Active Infrastructure must be balanced between the flexibility of a managed network infrastructure against the safety and security requirements inherent in sharing that infrastructure. This balance must be achieved while keeping the usability of the network.

Active Networking solutions includes:

- Switching.
- Routing.
- Wireless.
- Collaboration.
- Computing and virtualization.

PASSIVE INFRASTRUCTURE

Passive cabling infrastructure is structured cabling design and installation governed by a set of standards that specify wiring data centres, offices and apartment buildings for data or voice communications using various types of cables, most commonly UTP, and fiber optics cabling plus modular connectors.

- Design and Build passive infrastructure.
- Design and Build Data centre.
- Design and Build fiber network.
- Design and Build fire alarm system.

SMART BUILDINGS

We are reaching a new age when it comes to building construction. No longer is it simply enough for our homes and offices to provide shelter and keep us warm. Today, thanks to the evolution of technology, it's possible to not only deliver all the services that occupants need but this can be done while making the building as efficient as possible, minimising costs and reducing the environmental impact of the building over its life.

WHAT IS A SMART BUILDING?

At its most basic, a smart building is one that is using technology to share information about what goes on in the building between systems so as to optimise the building's performance. This information is then used to automate various processes, from heating and ventilation to air conditioning and security.

Building overheads are a significant cost for any building owner/user. However, while these are a necessary business expense, the level of spend is often wasteful because it's not intelligently applied. So, lights may be on in unused rooms or spaces heated when there are no people around to enjoy the warmth. The main motivation behind the smart building is to avoid this kind of wasteful use of energy and resources, both to cut cost and to improve energy efficiency.

THE MAIN FEATURES OF SMART BUILDINGS

High speed Internet

Wireless

VPN

IP Telephony

Audio and Video Conferencing

visitor Management

Interactive Media

Digital Signage

Lighting

Elevators

7/24 Monitor

HVAC - Sensors

fire

Video Surveillance

Access

Energy



PHYSICAL SECURITY

IPLUS has recognized its expertise in providing State of the Art Systems for Security Solutions and its core strength lies in the extensive use of latest technology in exciting new applications such as Video Management Systems, Video and Audio analytics, Parking Management and Physical Security Management System. We offer Design to Commissioning services for the following systems.



IP SURVEILLANCE

We offer a complete solution for IP based Surveillance Systems requirements. We only design and install world reputable manufacturers equipment which is deemed suitable for the specific application requirements of the project. We ensure that the systems perform to the design criteria and objectives in every aspect.



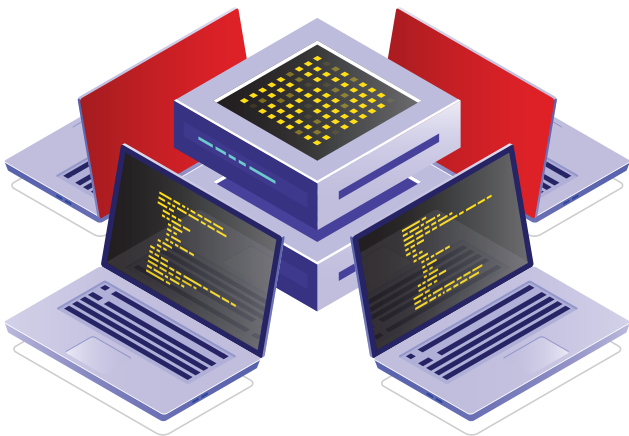
ACCESS CONTROL SYSTEMS

We offer a complete range of access control solutions and PC based access control, PIN, Proximity RFID card, Readers and Biometrics, etc. We have a wide range of products that cover many applications, including Malls, Commercial Complexes, Residential Towers, Hotel and Resorts and Hospitals and can also cover establishments requiring a higher level of security, such as Airports, Ports, Metro and other critical infrastructure.



INTRUSION DETECTION SYSTEM

We offer an effective security system from selection of equipment to quality of installation, and based on an evaluation of your security needs. Protection against theft and intrusion is a fundamental concern of every business house. Security system detectors sense the opening of doors and windows, breaking glass & human motion. Modern security systems are controlled using a keyboard by entering a code or by presenting an RFID card.



BARRIERS / BOLLARDS / TURNSTILES / BLOCKERS

We design the Traffic barriers assist in regulating traffic movement within any facility so that specific checks can be made on vehicles coming into the facility and thereby securing the facilities. Traffic barrier not only assists in regulating the traffic movement but also creates a deterrent and delays the infiltrator.



iplus@iplus-mea.com



+20 (2) 2328 3593 / 4



www.iplus-mea.com



9A, Plot 17, Al Yasmineen, 1st District,
in front of Telecom Exchange, New Cairo, Egypt